



TravisMathew Crestview 1/4-Zip TM1MW452



Get the good times rolling with our performance-based, lightweight 1/4-zip pullover. Outfit yourself for everything from early morning tee times to late night hangs.

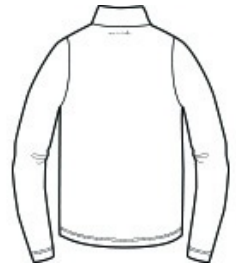
- 4.6-ounce, 70/23/7 polyester/cotton/spandex
- Zip-through collar
- Reverse coil zipper with TM logo pull
- TM logo woven label at left hem

CARE INSTRUCTIONS

Machine Wash Cold With Like Colors. Line Dry. Low Iron If Needed. Do Not Bleach.



front



back

HOW TO MEASURE



CHEST WIDTH

Measure under the arm and around the fullest part of the chest with arms down, keeping tape horizontal.

SIZE CHART

| | S | M | L | XL | 2XL | 3XL |
|-------|-------|-------|-------|-------|-------|-------|
| Chest | 35-37 | 38-40 | 42-44 | 45-47 | 48-50 | 52-54 |

COLOR INFORMATION

Please note: PMS code information is shown only when an exact match is available.



Black
PMS 426C



Grey Heather
PMS COOL GREY
10C



Vintage Indigo
Heather
PMS 7545C