



# Sport-Tek® Circuit Hooded Full-Zip ST870



Ideal for warmups or cooldowns, the Circuit Hooded Full-Zip moves with you throughout your practice, game or day.

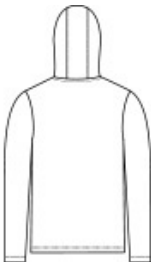
- 7.8-ounce, 78/22 poly/spandex
- Tear-away removable label
- Three-panel hood
- Vision® front zipper
- Secure front pockets

### CARE INSTRUCTIONS

Machine Wash Cold With Like Colors. Do Not Use Fabric Softener. Do Not Bleach. Tumble Dry Low. Remove Promptly. Cool Iron If Needed.



front



back

### HOW TO MEASURE



**CHEST WIDTH**  
Measure under the arm and around the fullest part of the chest with arms down, keeping tape horizontal.

### SIZE CHART

	XS	S	M	L	XL	2XL	3XL	4XL
Chest	32-34	35-37	38-40	41-43	44-46	47-49	50-53	54-57

### COLOR INFORMATION

Please note: PMS code information is shown only when an exact match is available.



Deep Black  
PMS BLACK C



Graphite



True Navy  
PMS 533C