

Mercer+Mettle™ Women's Long Sleeve Stretch Woven Shirt MM2001



With smart tailoring and a modern fit, this shirt will follow your every move, day or night. Topped with rimmed buttons and a back yoke seam, the solid fabric has a subtle, heathered look thanks to its end-on-end weave.

Fabric+Weight

- 3.4-ounce, 56/36/8 cotton/poly/spandex end-on-end (Air Blue and Gusty Grey)
- 3.5-ounce, 56/36/8 cotton/poly/spandex (Deep Black)
- 3.8-ounce, 56/36/8 cotton/poly/spandex (White)

Features+Benefits

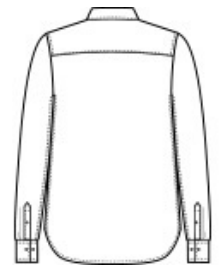
- Easy care
- Open collar
- Rimmed, satin-finished buttons
- Back yoke
- Relaxed fit
- Drop tail hem

CARE INSTRUCTIONS

Machine Wash Cold With Like Colors. Only Non-Chlorine Bleach If Needed. Tumble Dry Low. Cool Iron If Needed.

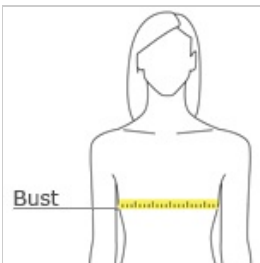


front



back

HOW TO MEASURE



BUST

Measure under the arm and around the fullest part of the bust with arms down, keeping tape horizontal.

SIZE CHART

| | XS | S | M | L | XL | 2XL | 3XL | 4XL |
|------|-------|-------|-------|-------|-------|-------|-------|-------|
| Size | 2 | 4/6 | 8/10 | 12/14 | 16/18 | 20/22 | 24/26 | 28/30 |
| Bust | 32-34 | 35-36 | 37-38 | 39-41 | 42-44 | 45-47 | 48-51 | 52-55 |

COLOR INFORMATION



Air Blue End On
End
PMS 651C



Deep Black
PMS BLACK C



Gusty Grey End
On End
PMS COOL GREY
8C



White