



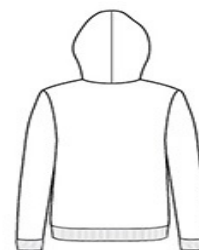
- 8.2-ounce, 50/50 poly/combed cotton fleece, 36 singles
- Made in the USA of US and imported materials
- Satin label
- Metal zipper
- Full-zip w ith w hite finished polyester draw cord and zipper tape
- Kangaroo pockets
- 1x1 rib knit cuffs and hem
- Classic fit

**CARE INSTRUCTIONS**

Maximum w ashing temperature 30 c, inside out, w ith like colors. Only oxygen/non-chlorine bleach allow ed. Tumble dry at low temperature, max 60 c. Do not iron. Do not dry clean.

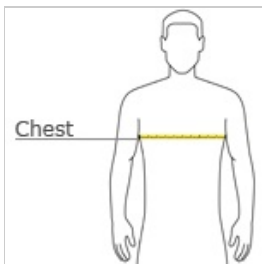


front



back

**HOW TO MEASURE**



**CHEST WIDTH**

Measure under the arm and around the fullest part of the chest w ith arms dow n, keeping tape horizontal.

**SIZE CHART**

	XS	S	M	L	XL	2XL
Chest	35-36	37-38	39-40	41-42	43-44	45-46

**COLOR INFORMATION**

**Please note: PMS code information is shown only when an exact match is available.**