



Eddie Bauer® Sweater Fleece Full-Zip. EB250



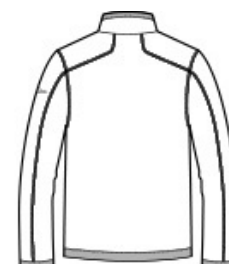
With an authentic outdoorsy lodge look, this refined sweater fleece delivers serious comfort. Smooth-faced and brushed-back for warmth, these styles also have stretch for easy movement. Woven fabric details add sophistication. Cadet collar, exposed coil zippers, open cuffs and open hem. Zippered chest pocket, front zippered pockets and embroidered Eddie Bauer contrast logo on the left sleeve. Made of 8.1-ounce, 100% polyester sweater fleece with 86/14 polyester/spandex woven trim. Produced using Low Impact Technology (L.I.T.™), which uses less dyes, thermal energy and water for enhanced softness, performance and after-care quality.

CARE INSTRUCTIONS

Machine Wash Cold, Inside Out With Like Colors, Do Not Use Fabric Softener, Only Non-Chlorine Bleach When Needed, Tumble Dry Low, Do Not Iron, Do Not Dry Clean.

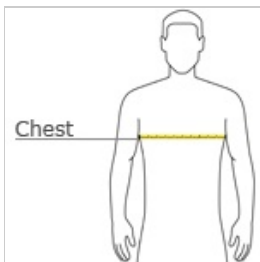


front



back

HOW TO MEASURE



CHEST WIDTH

Measure under the arm and around the fullest part of the chest with arms down, keeping tape horizontal.

SIZE CHART

	XS	S	M	L	XL	2XL	3XL	4XL
Chest	32-34	35-37	38-40	41-43	44-46	48-50	52-54	55-57

COLOR INFORMATION

Please note: PMS code information is shown only when an exact match is available.



Black
PMS BLACK C



Dark Grey Heather
PMS COOL GRAY
11C



River Blue Navy
Heather
PMS 533C