

*Eddie Bauer*

# Eddie Bauer® Ladies 1/2-Zip Microfleece Jacket EB227



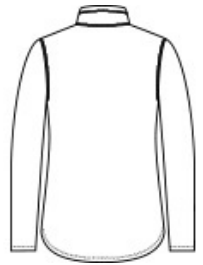
Warmth and comfort without the bulk. With flatlock stitching throughout, this lightweight, versatile jacket is worn on its own or layers easily under another jacket when it's cold. Reverse coil zippers, open cuffs and hem. Princess seams, scallop hem and embroidered Eddie Bauer contrast logo on right hem. Made of 5.3-ounce, 100% polyester microfleece with an anti-pill finish.

**CARE INSTRUCTIONS**

Machine wash cold. Only Non-chlorine bleach when needed. Tumble dry low. Cool iron if necessary.



front



back

**HOW TO MEASURE**



**BUST**

Measure under the arm and around the fullest part of the bust with arms down, keeping tape horizontal.

**SIZE CHART**

	XS	S	M	L	XL	2XL	3XL	4XL
Size	2	4/6	8/10	12/14	16/18	20/22	24/26	28/30
Chest	32-33	34-35	36-37	38-40	41-43	44-46	47-49	50-52

**COLOR INFORMATION**



Black  
PMS BLACK C



Grey Steel  
PMS 7540c



Ivory  
PMS NO MATCH